

MODEL #

FINISH

LED COLOUR

OPTIC

WATTAGE

DRIVER

VOLTAGE

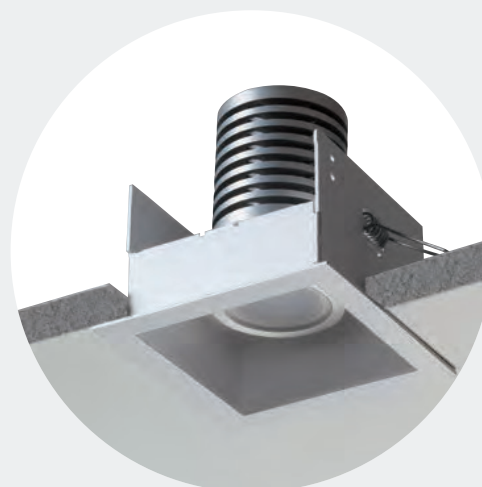


Faretto da incasso orientabile con flangia a vista, ideale per l'illuminazione di vetrine, espositori, corridoi, ingressi.

Adjustable recessed spotlight with visible frame, ideal for the lighting of shop-windows, stands, corridors, entrances.

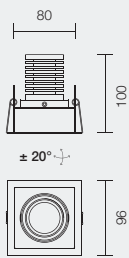
<b>Materiale</b>	Corpo in alluminio anticorodal anodizzato Schermo in PMMA trasparente o satinato Cassaforma in acciaio verniciato N° 2 finiture standard	
<b>N° Led</b>	1x 7/10W (Idea S) 2x 7/10W (Idea M) 3x 7/10W (Idea L)	
<b>Potenza assorbita</b>	7/10W (Idea S) 14/20W (Idea M) 21/30W (Idea L)	
<b>Collegamento</b>	In serie rispettando la polarità	
<b>Cablaggio</b>	Fornito con 25 cm di cavo	
<b>Installazione</b>	Cartongesso/legno: con cassaforma e molle metalliche (fornite)	
<b>Driver switching</b>	(non inclusa) 700mA (7W) p. 425 (non inclusa) 1050mA (10W) p. 426	
<b>Fotometrie</b>	p. 404	
<b>Note</b>	Faretto orientabile (360° su asse orizzontale e +/- 20° su asse verticale) Versione IP54	p. 284

<b>Material</b>	Anticorodal anodized aluminium body Transparent or satinized PMMA diffuser Varnished steel housing box No. 2 standard finishings	
<b>Led no.</b>	1x 7/10W (Idea S) 2x 7/10W (Idea M) 3x 7/10W (Idea L)	
<b>Power absorption</b>	7/10W (Idea S) 14/20W (Idea M) 21/30W (Idea L)	
<b>Connection</b>	Series connection respecting polarities	
<b>Wiring</b>	Provided with a 25 cm long cable	
<b>Installation</b>	On false ceiling/ wood with housing box and springs (included)	
<b>Driver switching</b>	(not included) 700mA (7W) p. 425 (not included) 1050mA (10W) p. 426	
<b>Photometries</b>	p. 404	
<b>Note</b>	Adjustable spot (360° on the horizontal axis, +/- 20° on the vertical axis) IP54 version	p. 284



MODEL #      FINISH      LED COLOUR      OPTIC      WATTAGE      DRIVER      VOLTAGE

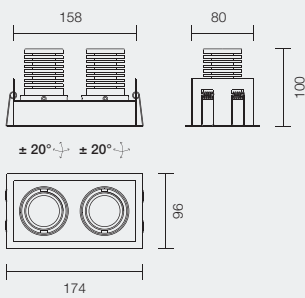
## ideal S



**IP40**

CODE	OPTIONS	SUPPLY	N°LED	LED COLOUR	OPTICS	WATT	FINISHING	FILTER
<b>L6IDE</b>	...	...	...	...	...	...	...	...
	<b>S</b> 1 LED	<b>I</b> CC	<b>1</b>	<b>1</b> 5000°K <b>2</b> 4000°K <b>3</b> 3000°K <b>W</b> 2700°K	<b>1</b> 28° <b>2</b> 38° <b>3</b> 58° <b>4</b> 120°	<b>7</b> <b>10</b>	<b>B</b> White RAL9003 <b>O</b> Black RAL9005	<b>HC</b> Honeycomb lower

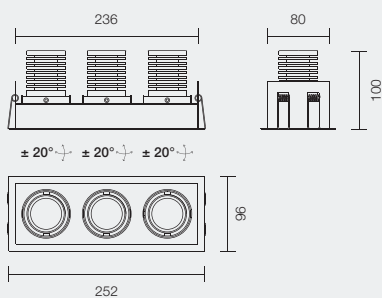
## ideal M



**IP40**

CODE	OPTIONS	SUPPLY	N°LED	LED COLOUR	OPTICS	WATT	FINISHING	FILTER
<b>L6IDE</b>	...	...	...	...	...	...	...	...
	<b>M</b> 2 LED	<b>I</b> CC	<b>2</b>	<b>1</b> 5000°K <b>2</b> 4000°K <b>3</b> 3000°K <b>W</b> 2700°K	<b>1</b> 28° <b>2</b> 38° <b>3</b> 58° <b>4</b> 120°	<b>7</b> <b>10</b>	<b>B</b> White RAL9003 <b>O</b> Black RAL9005	<b>HC</b> Honeycomb lower

## ideal L



**IP40**

CODE	OPTIONS	SUPPLY	N°LED	LED COLOUR	OPTICS	WATT	FINISHING	FILTER
<b>L6IDE</b>	...	...	...	...	...	...	...	...
	<b>L</b> 3 LED	<b>I</b> CC	<b>3</b>	<b>1</b> 5000°K <b>2</b> 4000°K <b>3</b> 3000°K <b>W</b> 2700°K	<b>1</b> 28° <b>2</b> 38° <b>3</b> 58° <b>4</b> 120°	<b>7</b> <b>10</b>	<b>B</b> White RAL9003 <b>O</b> Black RAL9005	<b>HC</b> Honeycomb lower