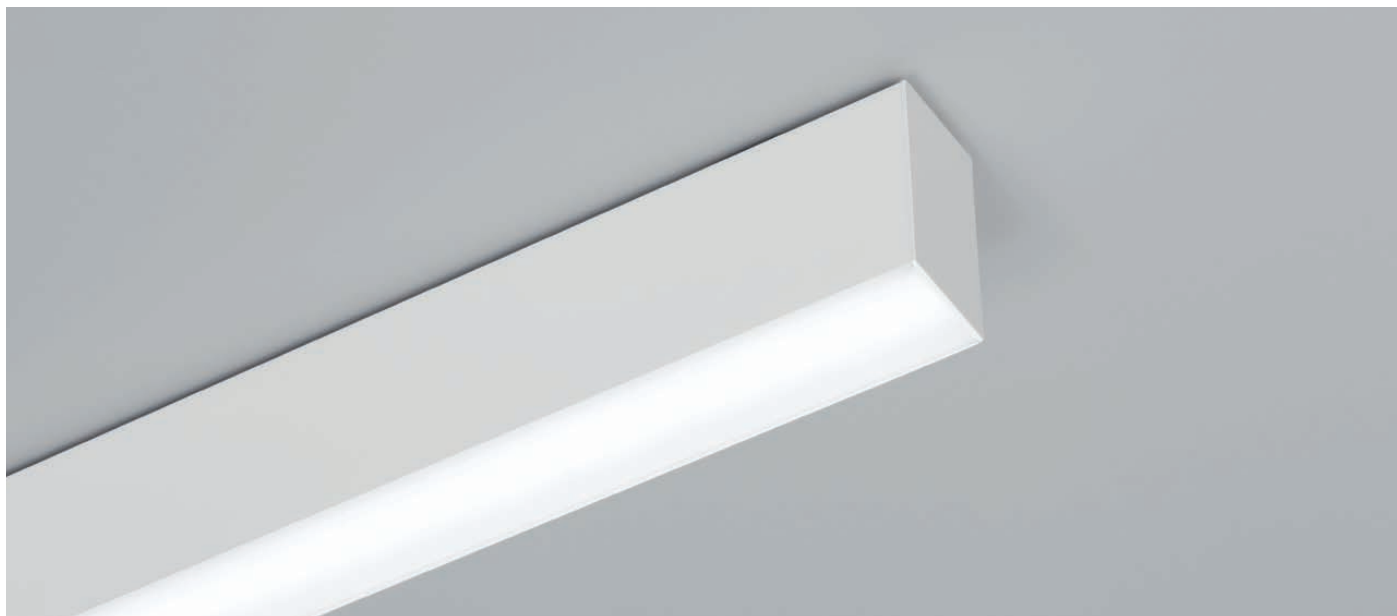


LINE™

CEILING LED SYSTEM

TYPE:

PROJECT NAME:



LINE

CEILING SYSTEM

Conceived for enhancing the light, Line is a modular single emission ceiling lamp made from epoxy polyester powder coated aluminium and it is equipped with an opal polycarbonate diffuser, high efficiency LED modules and driver. The lamp is suspended with galvanized steel cables (not included) with quick-adjust regulation devices. A wide range of accessories is available to customize the system. This product includes wiring with four wires that pass through two electrical circuits with shared neutral. Micro-prismatic polymethyl methacrylate screen reducing the luminaire's direct lighting (UGR<19, standards UNI-11165 and EN 12464-1), SA emergency version (1 hour of autonomy) and switch-dim/DALI dimmable version available on request. Its degree of protection against the penetration of dust, solid objects and liquids is IP40.

SPECIFICATION SHEET

LINE™

CEILING LED SYSTEM

TYPE:

PROJECT NAME:







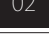


LINE SOFT

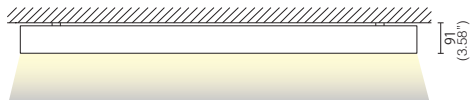
| CODE | W | Lm (3000K) |
|-------------------|----|------------|
| L25A6-614S.084... | 18 | 2430 |
| L25A6-614S.112... | 24 | 3250 |
| L25A6-614S.140... | 30 | 4060 |
| L25A6-614S.168... | 36 | 4870 |
| L25A6-614S.196... | 42 | 5680 |
| L25A6-614S.224... | 48 | 6500 |
| L25A6-614S.252... | 54 | 7310 |
| L25A6-614S.280... | 60 | 8120 |

L25A6-015/100* *Micro-prismatic polymethyl methacrylate screen*

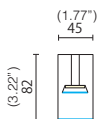
/DIMM2 DALI dimmer
 /DIMM3 DIM-switch dimmer *not available for code L25A6-614S.084*
 /EM emergency module

*code per meter (39.37")

-  105°
-  TC 3000K / 4000K
-  IP 40
-  CRI >80
-  EEI A++
-  RG 0
-  02 Matte black
-  09 Satin white
- 



| mm | code | Kg |
|----------------|----------------|-----|
| (33.26") 845* | L25A6-614S.084 | 1,8 |
| (44.29") 1125* | L25A6-614S.112 | 2,3 |
| (55.3") 1405* | L25A6-614S.140 | 2,8 |
| (66.33") 1685* | L25A6-614S.168 | 3,3 |
| (77.36") 1965* | L25A6-614S.196 | 4,1 |
| (88.38") 2245* | L25A6-614S.224 | 4,5 |
| (99.4") 2525* | L25A6-614S.252 | 5,1 |
| (110.4") 2805* | L25A6-614S.280 | 5,6 |



***NOTICE:** add a 2,5 mm thickness for the end caps to the beginning and the end of the system.

SPECIFICATION SHEET

LINE™

CEILING LED SYSTEM

TYPE:

PROJECT NAME:

LINE PRO

| CODE | W | Lm (3000K) |
|-------------------|-----|------------|
| L25A6-614P.084... | 36 | 4500 |
| L25A6-614P.112... | 48 | 6000 |
| L25A6-614P.140... | 60 | 7500 |
| L25A6-614P.168... | 72 | 9000 |
| L25A6-614P.196... | 84 | 10500 |
| L25A6-614P.224... | 96 | 12000 |
| L25A6-614P.252... | 108 | 13500 |
| L25A6-614P.280... | 120 | 15000 |

L25A6-015/100* *Micro-prismatic polymethyl methacrylate screen*

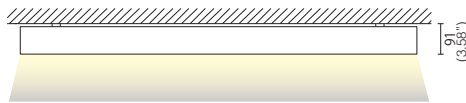
- /DIMM2 DALI dimmer
- /DIMM3 DIM-switch dimmer
- /EM emergency module
- *code per meter (39.37")

LINE PRO LIGHT

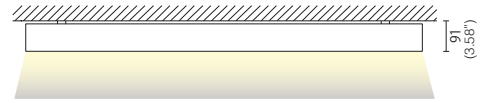
| CODE | W | Lm (3000K) |
|--------------------|----|------------|
| L25A6-614PL.084... | 27 | 3300 |
| L25A6-614PL.112... | 35 | 4400 |
| L25A6-614PL.140... | 44 | 5500 |
| L25A6-614PL.168... | 53 | 6600 |
| L25A6-614PL.196... | 62 | 7700 |
| L25A6-614PL.224... | 71 | 8800 |
| L25A6-614PL.252... | 80 | 9900 |
| L25A6-614PL.280... | 88 | 11000 |

L25A6-015/100* *Micro-prismatic polymethyl methacrylate screen*

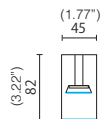
- /DIMM2 DALI dimmer
- /DIMM3 DIM-switch dimmer
- /EM emergency module
- *code per meter (39.37")



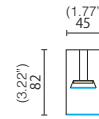
| mm | code | Kg |
|----------------|----------------|-----|
| (33.26") 845* | L25A6-614P.084 | 1,8 |
| (44.29") 1125* | L25A6-614P.112 | 2,3 |
| (55.3") 1405* | L25A6-614P.140 | 2,8 |
| (66.33") 1685* | L25A6-614P.168 | 3,3 |
| (77.36") 1965* | L25A6-614P.196 | 4,1 |
| (88.38") 2245* | L25A6-614P.224 | 4,5 |
| (99.4") 2525* | L25A6-614P.252 | 5,1 |
| (110.4") 2805* | L25A6-614P.280 | 5,6 |



| mm | code | Kg |
|----------------|-----------------|-----|
| (33.26") 845* | L25A6-614PL.084 | 1,8 |
| (44.29") 1125* | L25A6-614PL.112 | 2,3 |
| (55.3") 1405* | L25A6-614PL.140 | 2,8 |
| (66.33") 1685* | L25A6-614PL.168 | 3,3 |
| (77.36") 1965* | L25A6-614PL.196 | 4,1 |
| (88.38") 2245* | L25A6-614PL.224 | 4,5 |
| (99.4") 2525* | L25A6-614PL.252 | 5,1 |
| (110.4") 2805* | L25A6-614PL.280 | 5,6 |



***NOTICE:** add a 2,5 mm thickness for the end caps to the beginning and the end of the system.



***NOTICE:** add a 2,5 mm thickness for the end caps to the beginning and the end of the system.

SPECIFICATION SHEET

LINE™

CEILING LED SYSTEM

TYPE:

PROJECT NAME:

CODE DESCRIPTION

Suspension accessories

| | |
|---------------|--|
| L25A6-011 | End caps (pair). Colour 02-09 |
| L25A6-019.3 | Ceiling cup with supply cable 3x0.75mm ² 200cm (78.74"). Colour 02-09 |
| L25A6-019.4 | Ceiling cup with supply cable 4x0.75mm ² 200cm (78.74") for double switch use. Colour 02-09 |
| L25A6-019.5 | Ceiling cup with supply cable 5x0.75mm ² 200cm (78.74") for dimming and emergency use. Colour 02-09 |
| L25A6-017 | Suspension cables, 200cm (78.74") |
| L25A6-012 | In-line connector |
| X | Extension + 45mm for a 90° corner |
| Y | Extension + 45mm for a 90° corner |
| Z | Extension + 45mm for a 90° corner |
| K | Extension + 45mm for a 90° corner |
| W | Extension + 45mm for a 90° corner |
| L25A6-015/100 | Micro-prismatic polymethyl methacrylate diffuser (code per meter (39.37")) |



Cod. X



Cod. Y



Cod. Z



Cod. K



Cod. W

Ceiling accessories

| | |
|---------------|--|
| L25A6-011 | End caps (pair). Colour 02-09 |
| L25A6-012 | In-line connector |
| X | Extension + 45mm for a 90° corner |
| Y | Extension + 45mm for a 90° corner |
| Z | Extension + 45mm for a 90° corner |
| K | Extension + 45mm for a 90° corner |
| W | Extension + 45mm for a 90° corner |
| L25A6-015/100 | Micro-prismatic polymethyl methacrylate diffuser (code per meter (39.37")) |

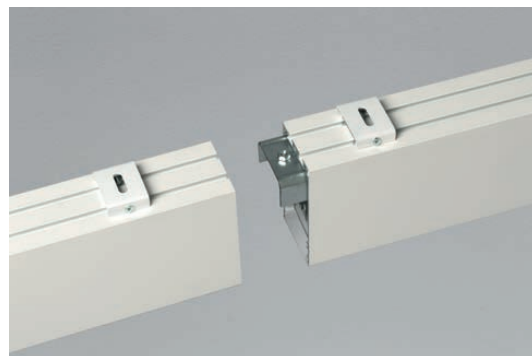
Recessed with trim accessories

| | |
|---------------|--|
| L25A6-011 | End caps (pair) |
| L25A6-012 | In-line connector |
| X | Extension + 48mm for a 90° corner |
| Y | Extension + 48mm for a 90° corner |
| Z | Extension + 48mm for a 90° corner |
| K | Extension + 48mm for a 90° corner |
| W | Extension + 48mm for a 90° corner |
| L25A6-015/100 | Micro-prismatic polymethyl methacrylate diffuser (code per meter (39.37")) |

Customized corner on request

Recessed trimless accessories

| | |
|---------------|--|
| L25A6-011 | End caps (pair) |
| L25A6-012 | In-line connector |
| X | Extension + 45mm for a 90° corner |
| Y | Extension + 45mm for a 90° corner |
| Z | Extension + 45mm for a 90° corner |
| K | Extension + 45mm for a 90° corner |
| W | Extension + 45mm for a 90° corner |
| L25A6-015/100 | Micro-prismatic polymethyl methacrylate diffuser (code per meter (39.37")) |



In-line connector

SPECIFICATION SHEET