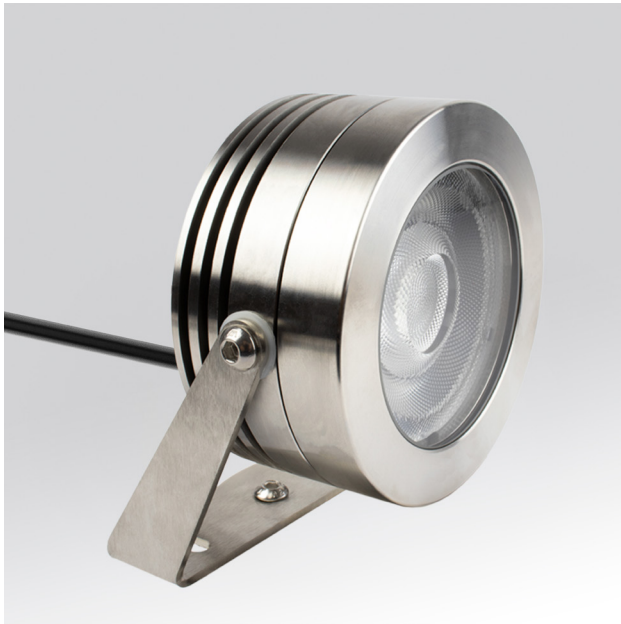


SPOTT™ 3.1

LED SUBMERSIBLE

TYPE:

PROJECT NAME:

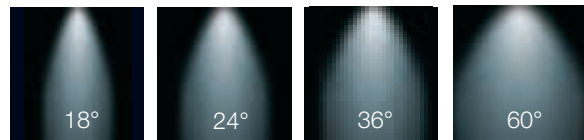


L5PW31	-	-	-	-		-
MODEL #	WATT	LED	OPTICS	FINISH	VOLTAGE	

DESCRIPTION:

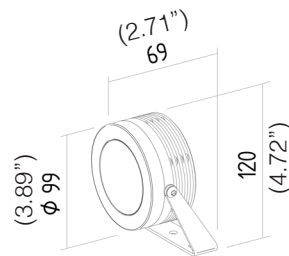
Adjustable spotlight constructed entirely in aisi 316L stainless steel. May be installed to a depth of up to 3m (120"). Supplied with 3m (120") of neoprene wiring. This product is recommended for more unusual locations such as caves and waterfalls, when high performance is required. it produces shafts of light creating theatrical effects.

SPOT LIGHT



SPOTT 3.1 Dimensions

L5PW31



LED COLORS

4000K WHITE
 2700K WHITE 5000K WHITE
 3000K WHITE RGB

FINISH

INOX STEEL

WATTAGE 12W 24W

VOLTAGE 120V 220V 277V

STANDARD OPTICS

18° 36°
 24° 60°

RGBW OPTICS

24° 60°
 36°

SPECIFICATION SHEET

SPOTT™ 3.1

LED SUBMERSIBLE

TYPE:

PROJECT NAME:

ELECTRICAL FEATURES

POWER CONSUMPTION	12W / 24W RGB version: 12W / 24W
POWER SUPPLY	24Vdc
POWER SUPPLY UNIT	Standard version: 24Vdc not included RGBW version: 24vdc with controller not included
DIMMING	Dimmable 0 -10V, LTE, RGB must use controller
CONNECTION	24Vdc - Parallel

LIGHTING FEATURES

OPTICS	Standard version: 18°, 24°, 36°, 60° RGBW version: 24°, 36°, 60°
AVERAGE LED LIFE	50.000h L80 B10

MECHANICAL FEATURES

WEIGHT	kg 2,1
FINISHES	Steel
INSTALLATION	Floor mounting with bracket included, on ground with peg not included, on poles/trees by mounting strap included
MATERIAL	AISI 316L stainless steel body, satinized stainless steel bracket, transparent tempered glass and PMMA lens

GENERAL FEATURES

OPERATING TEMPERATURE	-10°C +45°C
INGRESS PROTECTION	IP68
MPACT RESISTANCE	IK07
GLOW WIRE TEST	960°C
SCREEN TEMPERATURE	40° @ Ta = 25°
APPLIANCE CLASS	III
WALKOVER	/
DRIVE OVER	/
POWER CABLES	Provided with 3m (120") cable

SPECIFICATION SHEET

LEDOLOGY®

A **Luminart** BRAND

WWW.LEDOLOGY.COM


SPOTT™ 3.1

LED SUBMERSIBLE


TYPE:

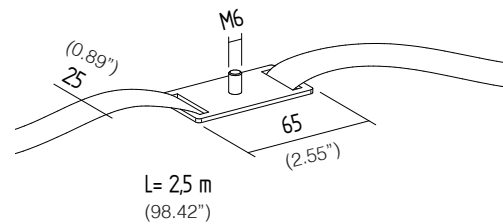
PROJECT NAME:

ACCESSORIES

CODE	PI002
TPOLOGY	Peg  kg 0,10
MATERIAL	AISI 304 Stainless steel (3.89")



CODE	CIN20
TPOLOGY	Mounting Strap  kg 0,11
MATERIAL	Polyester tape, zinc plated steel buckle, AISI 304 base



SPECIFICATION SHEET

LEDOLOGY®

A **Luminart** BRAND

WWW.LEDOLOGY.COM