

# FRAME™ V2

WINDOW/ARCHWAY HIGHLIGHTER

TYPE:

PROJECT NAME:

## ELECTRICAL FEATURES

POWER CONSUMPTION	3,2W / 6W
POWER SUPPLY	C.C.
CONNECTION	Serie   Series

## LIGHTING FEATURES

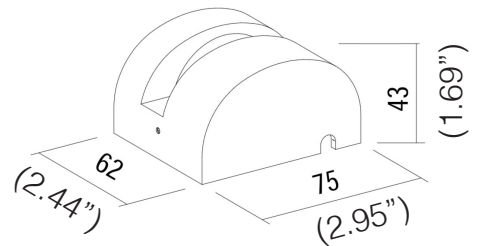
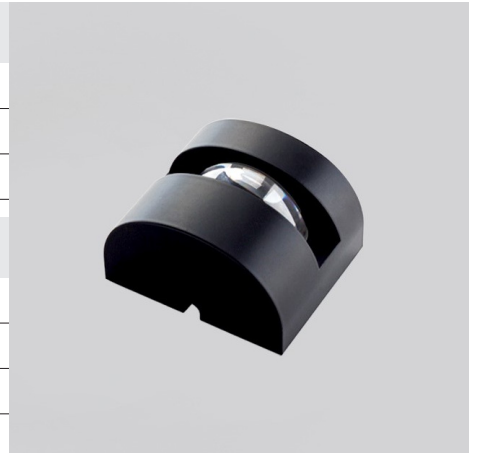
LED COLOUR	2200K, 2700K, 3000K, 4000K, Red, Green, Blue
CRI	>80 (2200K, 2700K, 3000K, 4000K)
OPTICS	3° x 180°
3000K REAL OUTPUT FLUX	3,2W 111lm 6W 222lm
AVERAGE LED LIFE	50.000h L80 B10

## MECHANICAL FEATURES

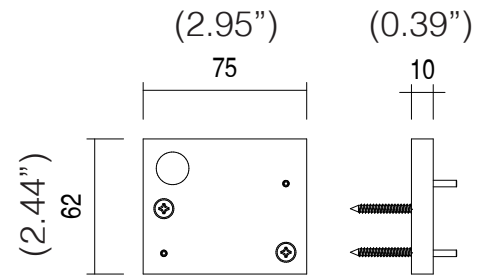
WEIGHT	Kg 0,47
FINISHES	White, Grey, Black, Corten Anthracite, Sand
INSTALLATION	Surface mounted with fixing base (included) and screws (not included)
MATERIAL	Anticorodal aluminum body, PMMA lens

## GENERAL FEATURES

OPERATING TEMPERATURE	-10°C +45°C
INGRESS PROTECTION	IP65
IMPACT RESISTANCE	IK08
GLOW WIRE TEST	960°C.
CLASS	II



Base Dimension:



## ORDERING INFO

Model (Order Code)	Finish Options	Optic Options	LED	Dimming Options
○ FRAME V2 3.2W	○ 01: White	○ 318: 3° x 180°	○ 22: 2200K	○ 120V LTE
○ FRAME V2 6W	○ 02: Grey		○ 27: 2700K	○ 120-277V 0-10V (Remote Driver)
	○ 03: Black		○ 30: 3000K	
	○ 04: Corten Anthracite		○ 40: 4000K	
	○ 05: Sand		○ R: Red	
			○ G: Green	
			○ B: Blue	



SPECIFICATION SHEET