

FRAME™ EX PLUS 1

WINDOW/ARCHWAY HIGHLIGHTER

TYPE:

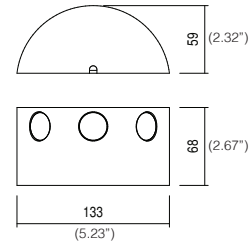
PROJECT NAME:

FRAME EX PLUS 1

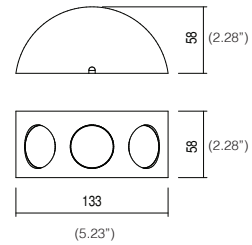


	Anticorodal aluminium body
Material	Transparent glass
	PMMA lens
Abs. Power	Normal version 1 x 6W RGB version 1 x 9W
Connection	Normal version 24Vdc Paralel 120Vac Mains voltage RGB version C.C. Series
Wiring	Provided with 50 cm cable
Installation	On ground with mounting base and set screws (included)
Power supply	6W - 24Vdc (Remote Driver)
Finishing	<ul style="list-style-type: none"> ■ .01 Anodized aluminium ■ .02 Matt white RAL9003 ■ .08 Matt black RAL9005 ■ .09 Corten ■ .17 Anthracite
Also available	<ul style="list-style-type: none"> ■ 5000 K ■ Rosso Red ■ Verde Green ■ Blu Blue <p>Customized cable length</p>

FRAME EX PLUS 1



FRAME EX PLUS 1 RGBW



SPECIFICATION SHEET

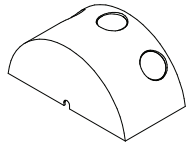
FRAME™ EX PLUS 1

WINDOW/ARCHWAY HIGHLIGHTER

TYPE:

PROJECT NAME:

FRAME EX PLUS 1

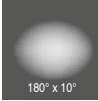


IP65



kg 0,84



	SUPPLY	W	LM	OPTICS	LED COLOR	CODE	+	FINISHING
	24Vdc	6	510	180° x 10°	3000 K	L01LOX51235	.01 .02 .08 .09 .17	
	24Vdc	6	540	180° x 10°	4000 K	L01LOX51245	.01 .02 .08 .09 .17	
	120Vac	6	510	180° x 10°	3000 K	L01LOX51335	.01 .02 .08 .09 .17	
	120Vac	6	540	180° x 10°	4000 K	L01LOX51345	.01 .02 .08 .09 .17	

POWER SUPPLIES REQUIRED:

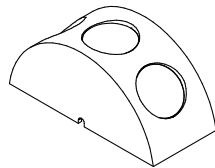
24Vdc (6W) IP67

AE24018 [18W] (1/2 Fixtures)

AE24035 [35W] (1/4 Fixtures)

AE24060 [60W] (1/8 Fixtures)

FRAME EX PLUS 1 RGBW

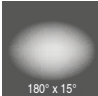


IP65



kg 0,74



	SUPPLY	W	LM	OPTICS	LED COLOR	CODE	+	FINISHING
	C.C.	9	-	180° x 15°	RGBW	L01LOX51115	.01 .02 .08 .09 .17	

SPECIFICATION SHEET